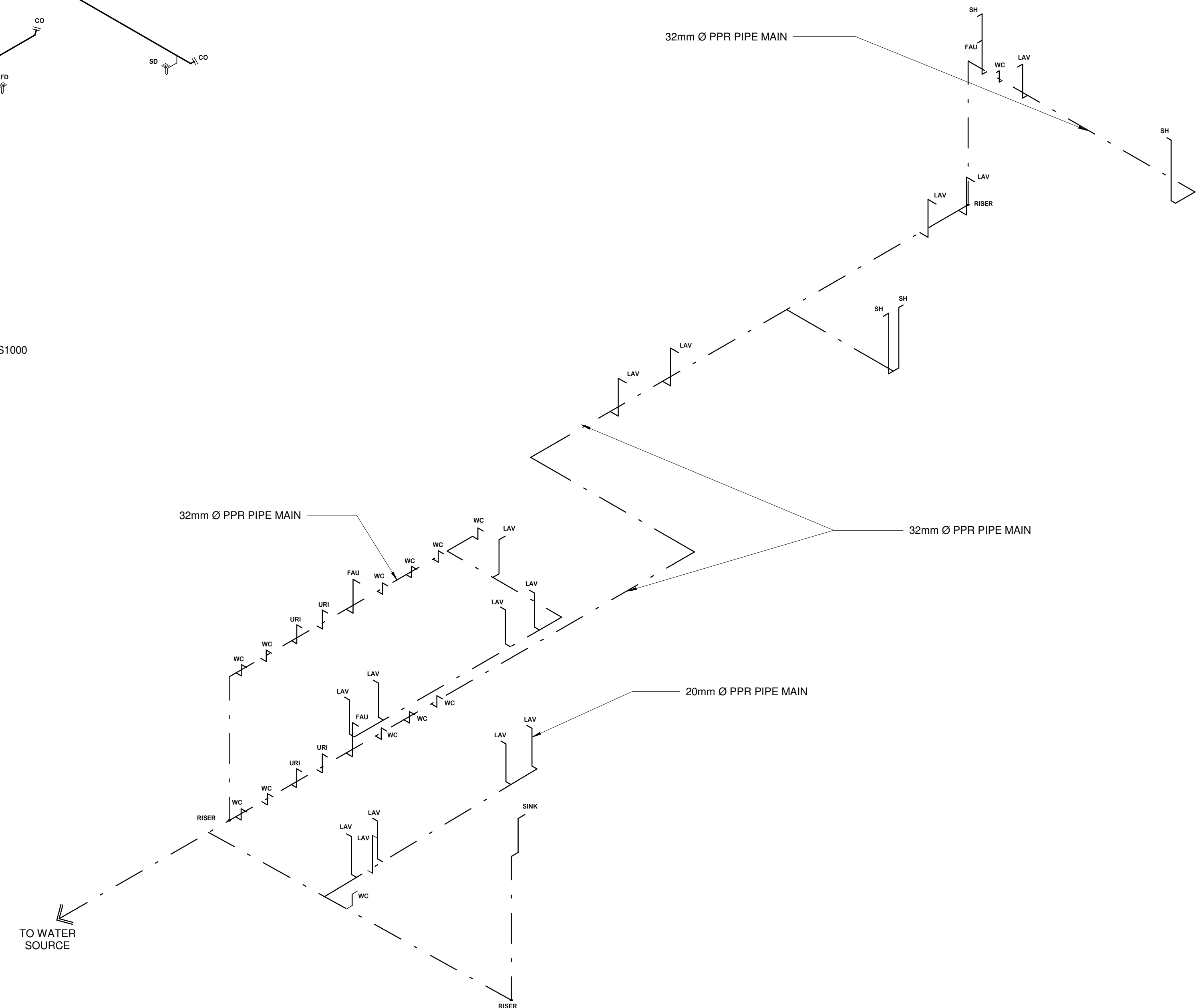


1 SEWERLINE (ISOMETRIC)



2 WATERLINE (ISOMETRIC)



FROM THE OFFICE:
PHYSICAL PLANNING AND DEVELOPMENT OFFICE
 2/F 202 ADMINISTRATION BLDG. MARIANO MARCOS STATE UNIVERSITY
 CITY OF BATAK, 2906 ILOCOS NORTE
 TELEFAX: +63 (77)792-3191

DRAWN BY:
BJAY A. DAYANG
 DRAFTSMAN I
 PREPARED BY:
PHILIP P. PADRE
 ENGINEER I

SIGNED & SEALED BY:
FRANZ ELYN T. PAJINAG
 SANITARY ENGINEER / MASTER PLUMBER
 PRC NO.: 0008980
 PTR: 0146215
 PLACE ISSUED: CITY OF BATAK
 DATE: JANUARY 04, 2022
 TIN: 323-274-380

PROJECT TITLE:
CONSTRUCTION OF RDE BUILDING PHASE III
 LOCATION: **MMSU CRL-CITY OF BATAK, ILOCOS NORTE**

CONFORME:
BJORN S. SANTOS
 DIRECTOR, RESEARCH
 RECOMMENDING APPROVAL:
ROMEO R. DULDUALO
 DIRECTOR, PPDO

APPROVED BY:
SHIRLEY C. AGRUPIS
 UNIVERSITY PRESIDENT

SHEET CONTENTS:
 SEWERLINE (ISOMETRIC)
 WATERLINE (ISOMETRIC)
Drawings and specifications and other contract documents duly signed, stamped or sealed, as instruments of service, are the intellectual property and documents of the architect, whether the object for which they are made is executed or not. It shall be unlawful for any person to duplicate or to make copies of said documents for use in the repetition of and for other project or building, whether executed party or in whole, without the written consent of architect or author of said document. Art. IV-Sec. 338A9266

SHEET NO:
 P-6
 6 7